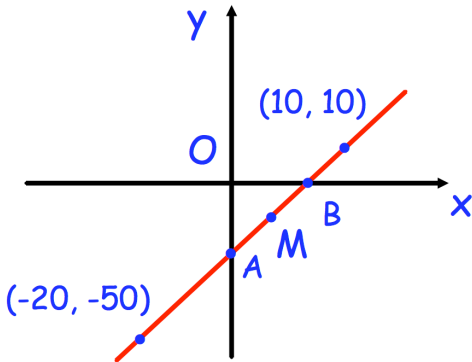


15th February



Corbettmaths

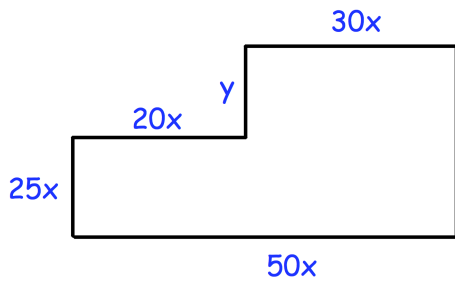
The line below passes through the point $(-20, -50)$ and $(10, 10)$



M is the midpoint of A and B.

Find the coordinates of the point M.

The line meets the y-axis at the point A and the x-axis at the point B.



Show that $y = 105 - 75x$

The perimeter of this shape is 210cm

The area of the shape is $A\text{cm}^2$

Show that $A = 3150x - 1000x^2$

Use differentiation to work out the maximum value of A as x varies.