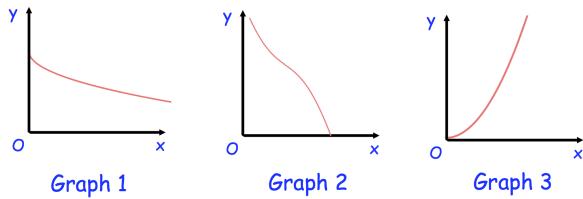


**18th January**

Corbettmaths



Increasing function

Decreasing function

Graph 1



Graph 2

Graph 3

A curve has gradient function

$$\frac{dy}{dx} = -3x^2 + 1$$

Work out the gradient of the curve when  
 $x = -4$

The  $2 \times 2$  matrix **I** is the identity matrix.Write down the  $2 \times 2$  matrix **I**

Solve  $8^{x^2+4x+3} = 16^{x^2+5x+6}$