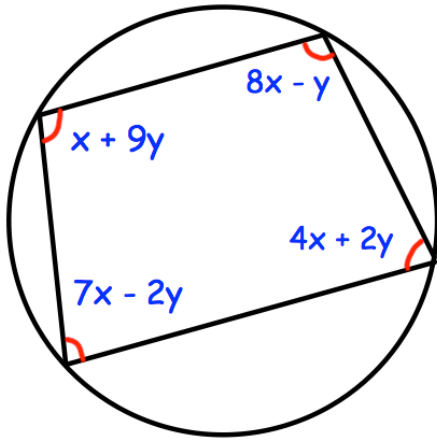


12th August



Corbettmaths

Shown is a cyclic quadrilateral

Find the values of  $x$  and  $y$ 

For what values of  $x$  is  
 $y = x^2 + 8x + 12$  a decreasing  
 function?

Use factor theorem to show that  
 $(x - 5)$  is a factor of  $x^3 + x^2 - 30x$

Solve

$$\sqrt{5}\cos x = \sin x$$

$$0^\circ \leq x \leq 360^\circ$$