

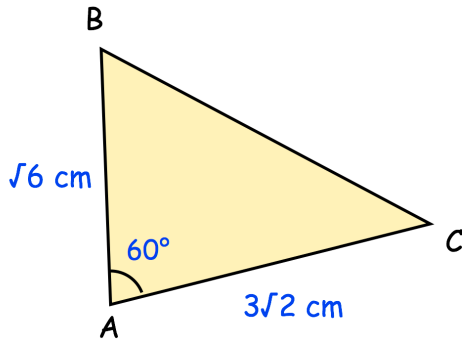
29th June



Corbettmaths

Solve the inequality

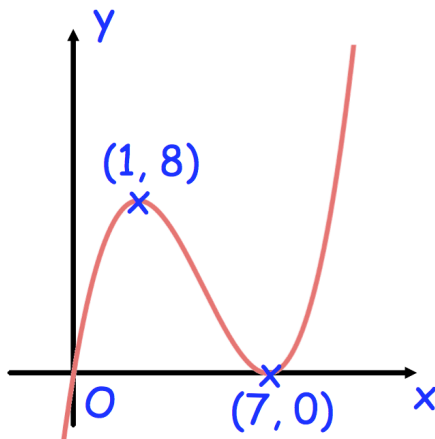
$$3x^2 - 11x + 6 > 0$$



Calculate the area of triangle ABC

A transformation is given by the matrix \mathbf{M}

$$\mathbf{M} = \begin{pmatrix} 1 & b \\ 0 & 3 \end{pmatrix}$$

The image of the point $(a, 4)$ under \mathbf{M} is $(-13, 4a)$ Work out the values of a and b .Write down the range of values of x for which $f(x)$ is a decreasing function.Shown is the graph of $y = f(x)$ $(1, 8)$ is a maximum point and $(7, 0)$ is a minimum point.