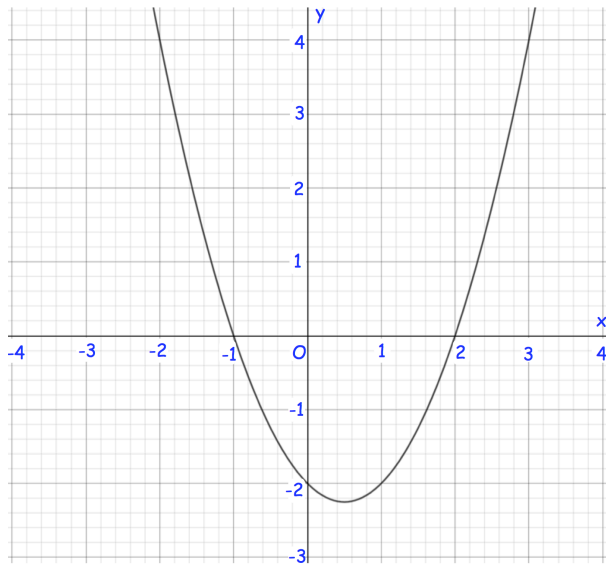


19th May

Corbettmaths

Factorise fully $15xy^3z + 20x^2y^4z$ 

By drawing an appropriate straight line, use your graph to find estimates for the solutions of $x^2 - 2x - 1 = 0$

Calculate the gradient of the graph $y = x^2 - x - 2$ at the point where $x = 1$

Shown is $y = x^2 - x - 2$

Solve the simultaneous equations

$$6x + 8y - 2z = 750$$

$$18x - 2y + 4z = 1100$$

$$4x - 4y + 2z = 100$$