

25th June



Corbettmaths

Kelly has 76 marbles and Hannah has 102 marbles.

How many more marbles does Hannah have than Kelly?

$$\begin{array}{r} 0 \text{ } 9 \text{ } 1 \\ \cancel{1} \cancel{0} 2 \\ - 76 \\ \hline 26 \end{array}$$

21 25 30 45

Which number is the odd one out? why?

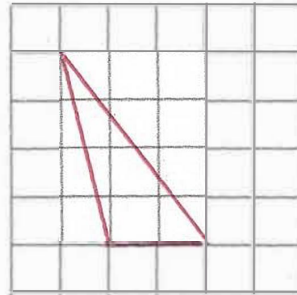
Lots of answers
Here are some:

21: not divisible by 5.

30: only even number.

45: only number greater than 40.

On the grid, draw a scalene triangle.



A bus to Belfast leaves Antrim Bus Station every 18 minutes.

The first bus each day leaves at 7am. Darren wants to get a bus after 8am.

08:12 am

What time is the first suitable bus?

18
36
54
72 1 hour 12 minutes



Write down the smallest **even** number you can using all four cards

1478