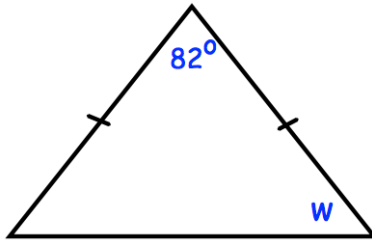
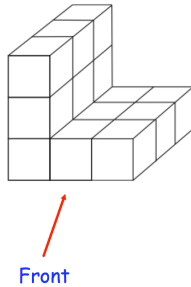


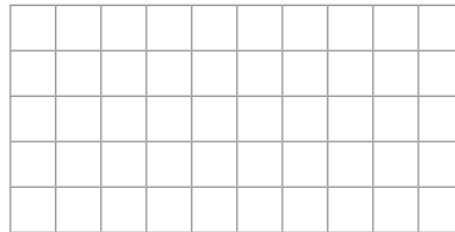
4th February

Corbettmαths

Shown below is an isosceles triangle.

Work out the size of the angle marked w .

Draw the front elevation



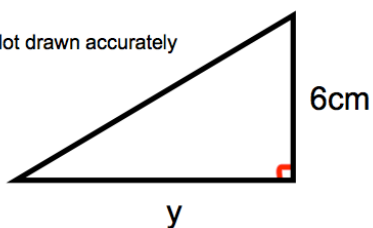
Gregory received £2400.

He gave $\frac{1}{3}$ of it to his favourite charity
and spent $\frac{1}{5}$ of it on a new violin.

What fraction of his money is left?

A bottle of water was $\frac{4}{5}$ full.Beth drinks $\frac{1}{3}$ of its contents.What is the fraction of the bottle is
now full?

Not drawn accurately

The area of the triangle is 21cm^2
Calculate y , the length of the base.