

11th October



Corbettmoths

$93 + 15$

$$\begin{array}{r} 93 \\ +15 \\ \hline 108 \end{array}$$

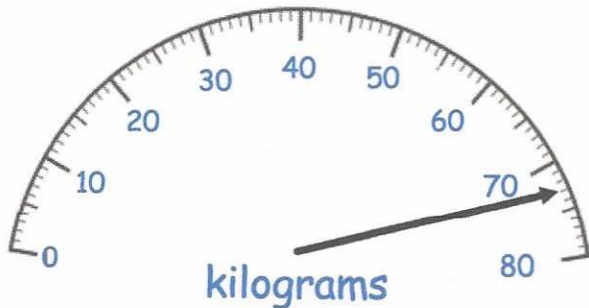
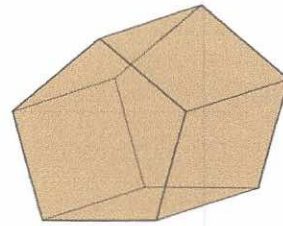
$98 - 39$

$$\begin{array}{r} 98 \\ -39 \\ \hline 59 \end{array}$$

Shown is a pentagonal prism.

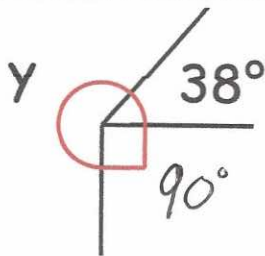
How many vertices does it have?

10



What weight is shown on the scales?

73 kg



Find y

232°

Work out

$(5 \times 4)^2$

$20^2 = 400$