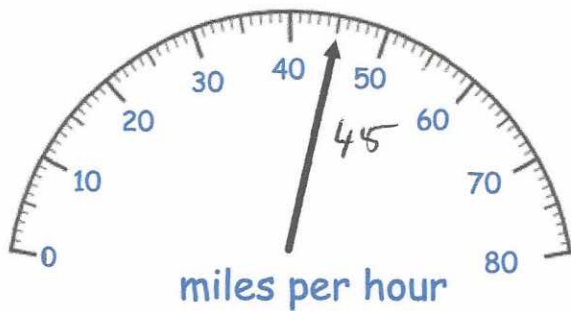


14th September



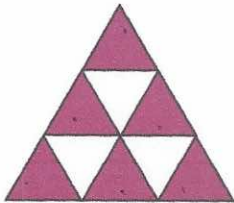
Corbettm@ths



The speed limit is 70mph

How many miles per hour below the speed limit is the car travelling?

$$70 - 45 = 25 \text{ mph}$$



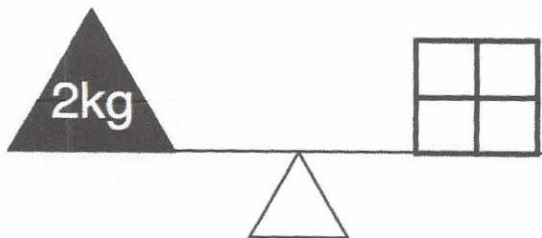
$$\frac{6}{9}$$

What fraction of the shape is shaded?

$$\frac{2}{3}$$

Write **seven thousand, eight hundred and nineteen** in figures.

7819



Four identical blocks weigh 2kg in total. Find the weight of one block.

$$2000 \div 4 = 500g$$

Work out $966 \div 7$

$$\begin{array}{r} 138 \\ 7 \overline{) 966} \\ \underline{7} \\ 26 \\ \underline{21} \\ 56 \\ \underline{56} \\ 0 \end{array}$$

138