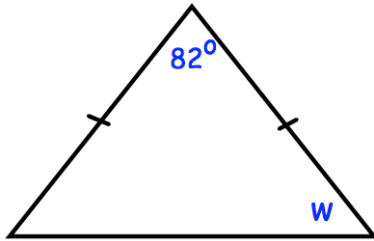
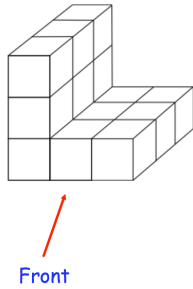




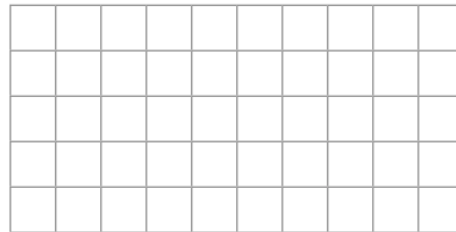
Shown below is an isosceles triangle.



Work out the size of the angle marked w.



Draw the front elevation



Gregory received £2400.

He gave $\frac{1}{3}$ of it to his favourite charity and spent $\frac{1}{5}$ of it on a new violin.

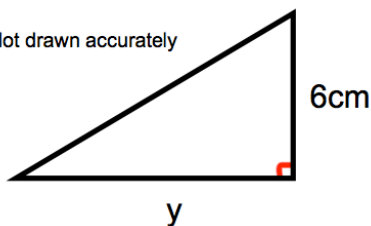
What fraction of his money is left?

A bottle of water was $\frac{4}{5}$ full.

Beth drinks $\frac{1}{3}$ of its contents.

What is the fraction of the bottle is now full?

Not drawn accurately



The area of the triangle is 21cm^2
Calculate y, the length of the base.