

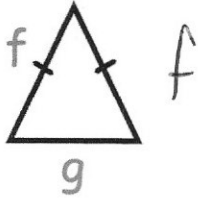
4th August

Foundation 5-a-day



Corbettm@ths

Shown below is an isosceles triangle



Write an expression for the perimeter

$$2f + g$$

The median of five numbers is 7.

Four of the numbers are 2, 7, 8 and 9.

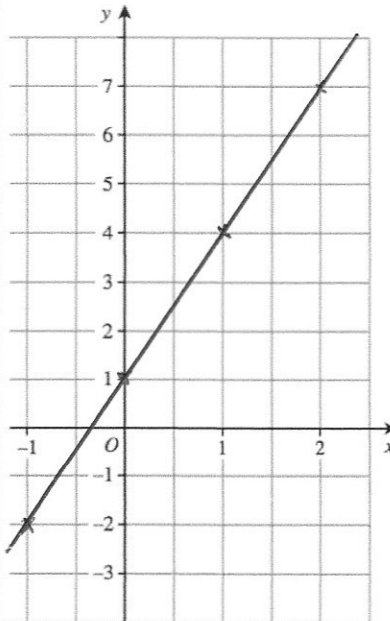
Write down a possible value of the fifth number.

1, 2, 7, 8, 9

①

x	-1	0	1	2
y	-2	1	4	7

Complete the table for  $y = 3x + 1$



Draw the graph  $y = 3x + 1$  on the grid.

Work out  $3.4 \times 8.25$

$$\begin{array}{r} 825 \\ \times 34 \\ \hline 3300 \\ +24750 \\ \hline 28050 \end{array}$$

28.05