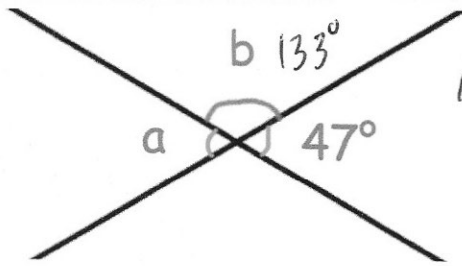


4th July

Foundation 5-a-day



Corbettm@ths



$$180 - 47 = 133$$

Work out the size of angles a and b

$$a = 47^\circ$$

$$b = 133^\circ$$

A lorry travels 100 miles at an average speed of 25 mph.

Work out how long the journey lasts.

$$100 \div 25 = 4 \text{ hours}$$

Olivia is measuring an obtuse angle in her maths exam.

She has written the answer 32°

Her teacher has said she has looked at the outside number instead of the inside number on the protractor.

What angle should Olivia have put on her exam?

$$180 - 32 = 148^\circ$$

Jam is made from sugar and strawberries in the ratio 3:5.

$$3 + 5 = 8$$

A jar contains 240g of sugar.

$$240 \div 3 = 80$$

$$80 \times 5 = 400$$

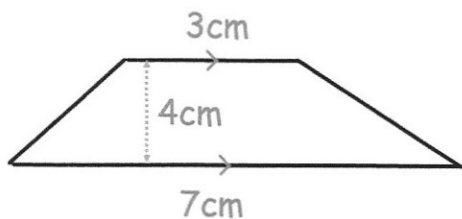
How many grams of strawberries are in the jar?

$$400 \text{ g}$$

How many grams of jam are in the jar?

$$80 \times 8 = 640 \text{ g}$$

$$(\text{or } 400 + 240 = 640 \text{ g})$$



Calculate the area of the trapezium

$$A = \frac{1}{2}(a+b)h$$

$$= \frac{1}{2}(3+7) \times 4$$

$$= \frac{1}{2}(10) \times 4$$

$$= 5 \times 4$$

$$= 20 \text{ cm}^2$$