

3rd April

Foundation 5-a-day



Corbettmths

$$\text{Time (min)} = 40 \times \text{weight (kg)} + 20$$

A chicken weighs 2.5kg.

How long does it take to cook?

$$40 \times 2.5 = 100$$

$$100 + 20 = 120 \text{ mins}$$

2 hours

A different chicken takes 260 minutes to cook.

Work out its weight.

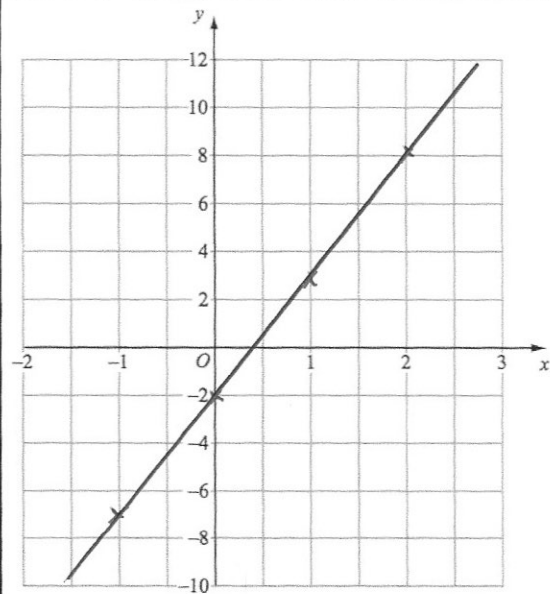
$$260 - 20 = 240$$

$$240 \div 40 = \text{answer}$$

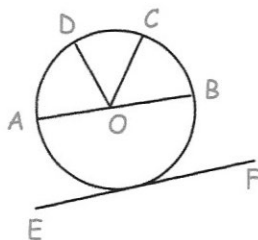
6 kg

Complete the table of values for $y = 5x - 2$

x	-1	0	1	2
y	-7	-2	3	8



Draw the graph of $y = 5x - 2$



What is the name of the line AB?

diameter