



$$\boxed{3} + \boxed{2} = \boxed{-1}$$

$$-6 \times \boxed{-6} = 36$$

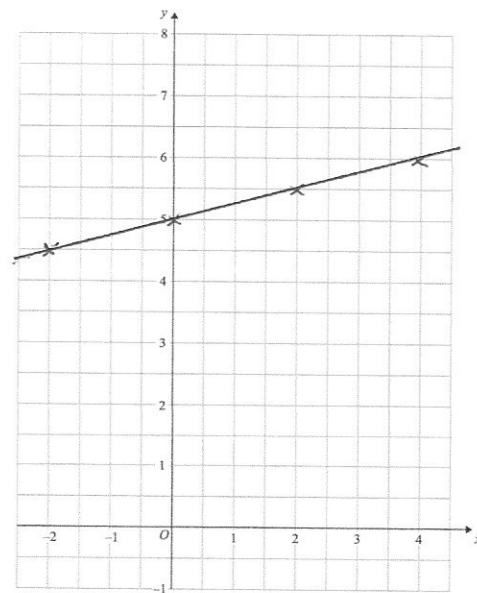
List the first 5 cube numbers

1, 8, 27, 64, 125

Complete the table of values for

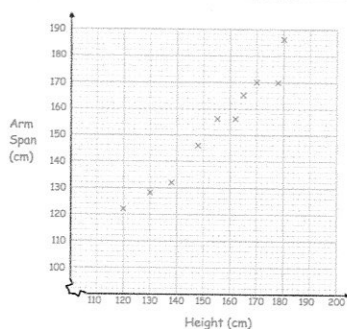
$$y = \frac{1}{4}x + 5$$

x	-2	-1	0	1	2	3	4
y	4.5	4.75	5	5.25	5.5	5.75	6



On the grid, draw the graph of

$$y = \frac{1}{4}x + 5$$



What type of correlation does this scatter graph show?

Positive