



Work out

$$4\frac{3}{10} - 2\frac{5}{9}$$

$$\begin{array}{r} 43 \\ \hline 10 \end{array} - \begin{array}{r} 23 \\ \hline 9 \end{array}$$

$$\begin{array}{r} 387 \\ \hline 90 \end{array} - \begin{array}{r} 230 \\ \hline 90 \end{array}$$

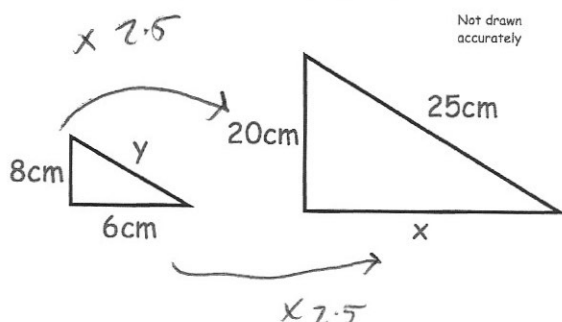
$$\begin{array}{r} 157 \\ \hline 90 \end{array} = 1\frac{67}{90}$$

Write 390000000 in standard form.

$$3.9 \times 10^8$$

Write 3.1×10^{-5} as an ordinary number.

$$0.000031$$



Shown below are two similar triangles.

Find the size of x .

$$15\text{cm}$$

4.823 has been truncated to three decimal places.

Write down an inequality to show the range of possible actual values.

$$4.823 \leq n < 4.824$$

Below are the first two terms of a geometric sequence.

4 8 _ _ _

Find the next three terms

$$16, 32, 64$$