

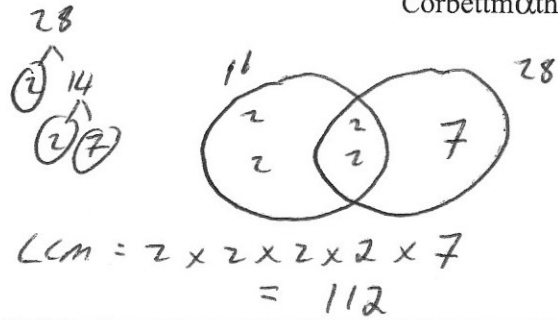


Find the lowest common multiple (LCM) of 16 and 28

$$16 = 2 \times 2 \times 2 \times 2$$

$$28 = 2 \times 2 \times 7$$

Handwritten prime factorization for 16:  $16 \rightarrow 8 \rightarrow 4 \rightarrow 2 \times 2$



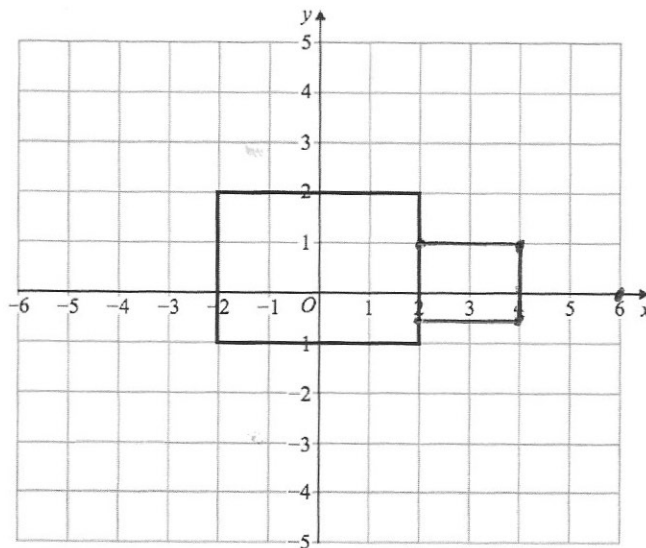
Make  $x$  the subject of the formula

$$A = \sqrt[3]{\frac{4x}{5}}$$

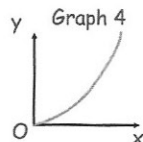
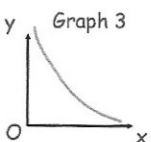
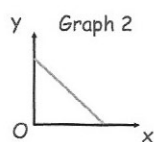
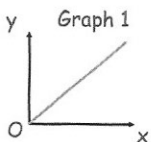
$$A^3 = \frac{4x}{5}$$

$$5A^3 = 4x$$

$$x = \frac{5A^3}{4}$$



Enlarge the rectangle by scale factor  $\frac{1}{2}$ , using centre of enlargement (6, 0).



One of the graphs could show that  $y$  is inversely proportional to  $x$ .

Which graph?

Graph 3