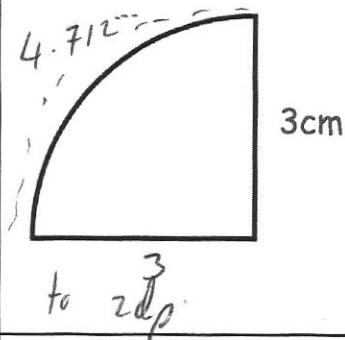




Find the perimeter of this quarter circle.

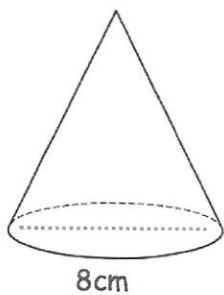
$$\begin{aligned}\pi \times 6 &= 18.84\dots \\ 18.84\dots \div 4 &= 4.712\dots \\ 4.712\dots + 3 + 3 &= \\ &10.71\text{cm}\end{aligned}$$



Simplify

$$\frac{4^5 \times 4^6}{4^3}$$

$$\frac{4^{11}}{4^3} = 4^8$$



10cm

8cm

Calculate the volume of the cone

$$\frac{1}{3} \times \pi \times 4^2 \times 10$$

$$167.55\text{cm}^3$$

3.6 has been rounded to one decimal place.

Write down the error interval.

$$3.55 \leq n < 3.65$$

Finn has some sweets in a bag.

5 of the sweets are lemon.

7 of the sweets are strawberry. } 12

The rest of the sweets are mint. 8

The probability that Finn takes a mint

flavoured sweet is $\frac{2}{5}$

$$\frac{8}{20} = \frac{2}{5}$$

How many mint flavoured sweets are in the bag?

$$\frac{x}{x+12} = \frac{2}{5}$$

$$5x = 2x + 24$$

$$3x = 24 \quad x = 8$$

8