



Expand and simplify

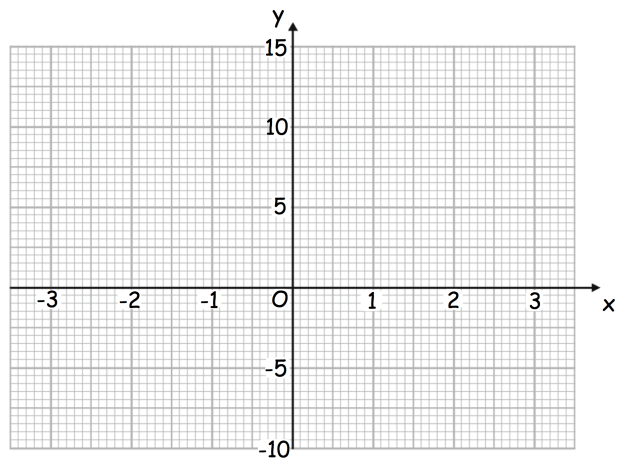
$$(y - 2)(2y + 5)$$

$$x = 2y + 3$$

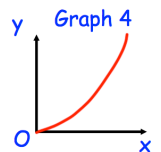
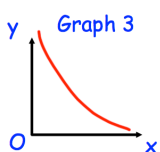
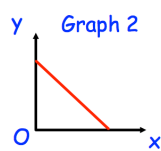
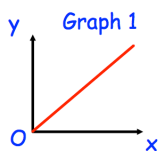
Rearrange the formula to make y the subject

Complete the table of values for $y = 10 - x - x^2$

x	-3	-2	-1	0	1	2	3
y							



On the grid, draw the graph of $y = 10 - x - x^2$ for the values of x from -3 to 3 .



One of the graphs shows that y is inversely proportional to x .

Which graph?