



The table gives information about the number of people voting for each party at an election.

Party	Number of Votes
Gold Party	12598
Pink Party	9112
Brown Party	20059
Purple Party	4466

46235
voted

There are 52852 people who can vote
The target was that 88% of people would vote.

Was the target met?

88% of 52852 = 46509.76
No, the target was not met

Write $\frac{126}{40}$ as a decimal

$$40 \overline{) 126.00} \begin{array}{r} 3 \\ 12 \\ \hline 6 \\ 60 \\ \hline 0 \end{array} \begin{array}{r} 0 \\ 0 \\ 3 \\ 0 \\ 1 \\ 5 \end{array}$$

3.15

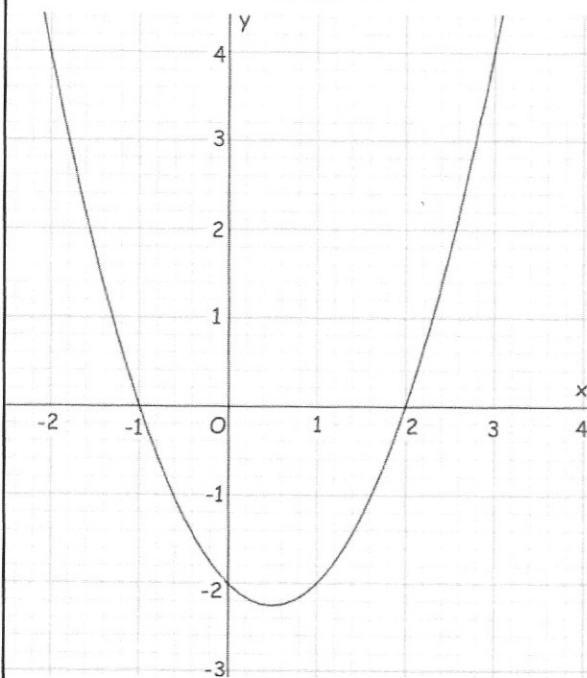
The population of an island has decreased by 40% over 50 years.
The population in 2020 was 360

Work out the population of the island in 1970.

$$60\% = 360$$

$$1\% = 6$$

$$100\% = 600$$



Shown is the graph of $y = x^2 - x - 2$

Use the graph to find the roots of the equation $x^2 - x - 2 = 0$

$$x = -1 \quad \text{or} \quad x = 2$$

Write down the coordinates of the turning point on the graph

$$y = x^2 - x - 2$$

$$(0.5, -2.25)$$