

Calculate the circumference of this circle, leaving your answer in terms of π

$$6\pi \text{ cm}$$

Expand and simplify

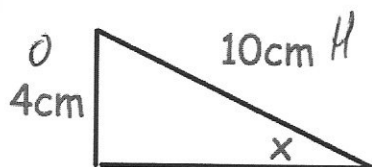
$$(x+4)(x+6) \quad x^2 + 6x + 4x + 24$$

$$x^2 + 10x + 24$$

Factorise $y^2 + y - 20$

$$(y+5)(y-4)$$

Shown is a right angled triangle.



Find angle x . $\sin x = \frac{4}{10}$

$$x = \sin^{-1} \frac{4}{10}$$

$$x = 23.58^\circ \text{ to } 2 \text{ dp}$$

Olivia has 36 DVDs.
This number of DVDs is 80% more than the number she had last month.

How many DVDs did Olivia have last month?

20

$$180\% = 36$$

$$1\% = 0.2$$

$$100\% = 20$$

Match each of the following

$4x + y$ ————— Expression

$x + x + x = 3x$ ~~Equation~~

$5x - 2 = 28$ ~~Formula~~

$V = lwh$ ~~Identity~~