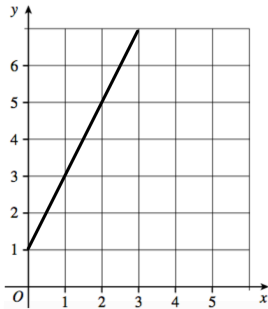




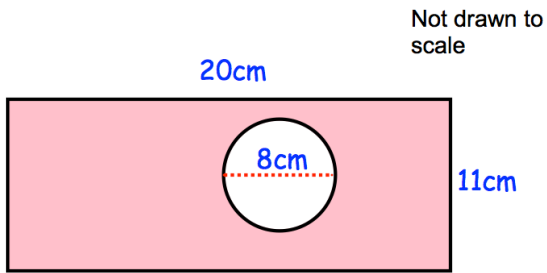
George is x years old
 Jayden is 3 years older than George
 The sum of their ages is 37

Solve the equation

Write an equation based on this information



Work out the gradient of line L

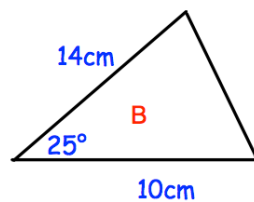
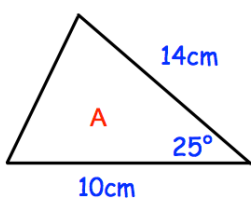


Calculate the shaded area

Solve the simultaneous equations

$$5x - 2y = 4$$

$$3x - 6y = 6$$



Triangles A and B are congruent.

State the reason why.