



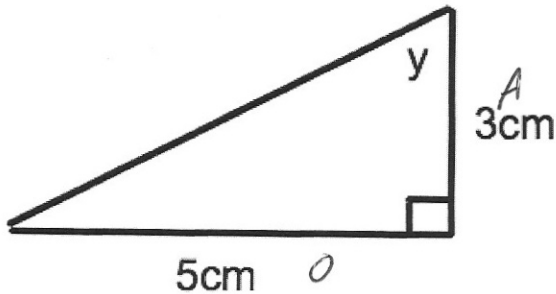
A water tank is two-thirds full. A quarter of a full tank is poured out.

What fraction of a tank is left?

$$\frac{2}{3} - \frac{1}{4}$$

$$\frac{8}{12} - \frac{3}{12} = \frac{5}{12}$$

$$\frac{5}{12}$$



Calculate angle y

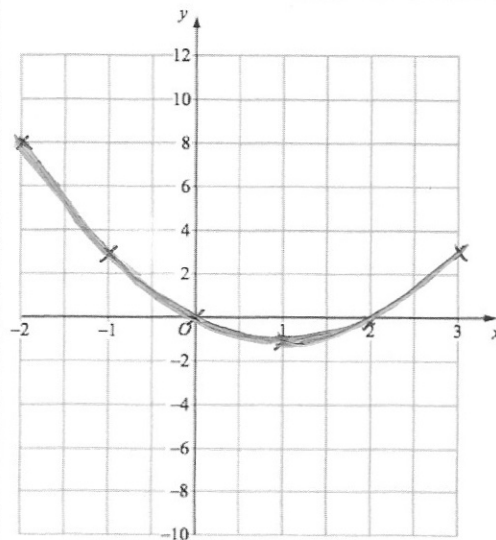
$$\tan y = \frac{5}{3}$$

$$y = \tan^{-1}\left(\frac{5}{3}\right)$$

$$= 59.04^\circ$$

Complete the table of values for $y = x^2 - 2x$ from $x = -2$ to 3

x	-2	-1	0	1	2	3
y	8	3	0	-1	0	3



On the grid, draw the graph of $y = x^2 - 2x$ for the values of x from -2 to 3.

Expand and simplify

$$(5w + 1)(3w + 2)$$

$$15w^2 + 10w + 3w + 2$$

$$15w^2 + 13w + 2$$

Expand and simplify

$$(y - 8)^2 \quad (y - 8)(y - 8)$$

$$y^2 - 8y - 8y + 64$$

$$y^2 - 16y + 64$$