



In 2016 the average waiting time for an operation was 15 days.  
 In 2017 the average waiting time for the same operation was 13 days.  
 Calculate the percentage decrease.

$$\frac{2}{15} \times 100$$

$$13.3\bar{3}\%$$

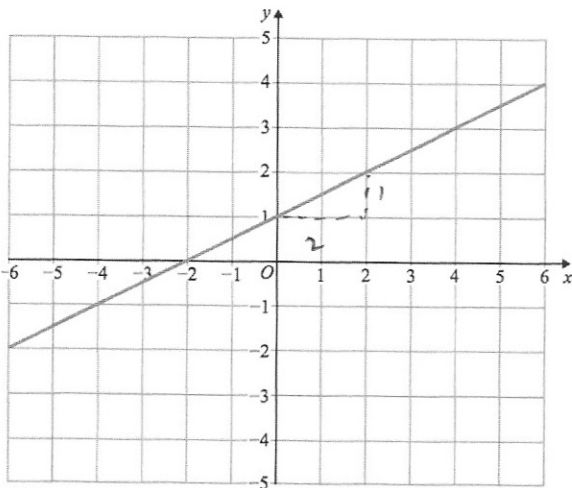
A group of men, women and children attend a concert.  
 the ratio of men to women is 5:7  
 the ratio of children to women is 2:3  
 There are 800 people at the concert.

How many women are at the concert?

$m : w : c$   
 $5 : 7$   
 $3 : 2$   
 $\times 3 \left( \begin{array}{l} 5 : 7 \\ 3 : 2 \end{array} \right) \times 7$   
 $15 : 21 : 14$   
 $15 + 21 + 14 = 50$

$800 \div 50 = 16$   
 $16 \times 21 = 336$

**336**



Work out the gradient of line L

$$\frac{1}{2}$$

Work out the equation of line L

$$y = \frac{1}{2}x + 1$$

$5x + 3$	$2x$	$3x - 5$	$x + 14$
58	22	28	25

The sum of the four expressions is 133.

Calculate the range.

$$58 - 22 = \underline{\underline{36}}$$

$$5x + 3 + 2x + 3x - 5 + x + 14 = 133$$

$$11x + 12 = 133$$

$$11x = 121$$

$$x = 11$$