



Expand and simplify

$$3(x - 4) - 2(7 - 9x)$$

$$3x - 12 - 14 + 18x$$

$$21x - 26$$

Write down the exact value of

$$\sin(60)$$

$$\frac{\sqrt{3}}{2}$$

Write down the exact value of

$$\tan(45)$$

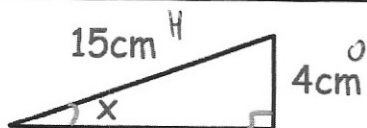
$$1$$

$$a = \begin{pmatrix} 0 \\ -4 \end{pmatrix} \quad b = \begin{pmatrix} 1 \\ 2 \end{pmatrix}$$

Work out  $4a + b$ 

$$4a = \begin{pmatrix} 0 \\ -16 \end{pmatrix} \quad b = \begin{pmatrix} 1 \\ 2 \end{pmatrix}$$

$$4a + b = \begin{pmatrix} 1 \\ -14 \end{pmatrix}$$



$$\sin x = \frac{4}{15}$$

$$\sin^{-1} \frac{4}{15} = 15.47\dots$$

Find  $x$ 

$$15.47^\circ$$

to 2dp

Make  $t$  the subject of the formula

$$2v = w + 9t$$

$$9t = 2v - w$$

$$t = \frac{2v - w}{9}$$