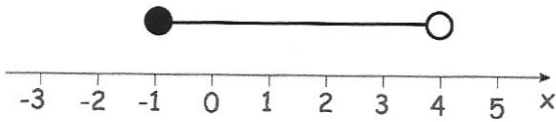




Write down the inequality shown by the diagram.



$$-1 \leq x < 4$$

“A prize is won every 302 seconds.”

≈ 5 minutes

Estimate how many prizes are won in one week.

$$60 \div 5 = 12 \text{ per hour}$$

$$7 \times 24 = 168 \text{ hrs per week}$$

$$12 \times 168 = \underline{2016}$$

The circumference of a circle is 40cm.

Find the area of the circle.

$$C = \pi \times d$$

$$40 \div d = 12.732 \dots$$

$$12.732 \dots \div 2 = 6.366 \dots$$

$$\pi \times 6.366 \dots^2$$

$$127.32 \text{ cm}^2$$

The table below shows information about delivery times, in minutes.

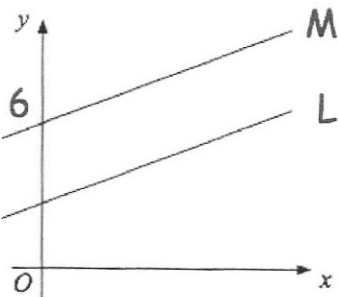
Delivery Time	Frequency
$0 < t \leq 10$	3
$10 < t \leq 20$	10
$20 < t \leq 30$	14
$30 < t \leq 40$	19
$40 < t \leq 50$	4

50 1360

fx
15
150
350
665
180
1360

Work out an estimate for the mean delivery time.

$$1360 \div 50 = 27.2 \text{ mins}$$



L has equation $y = \frac{1}{3}x + 2$

M is parallel to L and passes through (0, 6).

Write down the equation of M.

$$y = \frac{1}{3}x + 6$$