



Bramley apples cost £4.60 for a 3kg bag at Supervalue supermarket.

The same type of apples cost £11.40 for a 7.5kg bag at Nixon's supermarket.

$$4.60 \div 3 = \text{£}1.53 \text{ per kg}$$

$$11.40 \div 7.5 = \text{£}1.52 \text{ per kg}$$

Where are the apples the best value for value?

Nixon's

A regular polygon has interior angle 150°

$$180 - 150 = 30^\circ$$

How many sides does it have?

$$360 \div 30 = 12 \text{ sides}$$

In a survey, the ratio of the number of people who preferred tea to those who preferred coffee was 9:5

$$9 - 5 = 4$$

36 more people preferred tea to coffee.

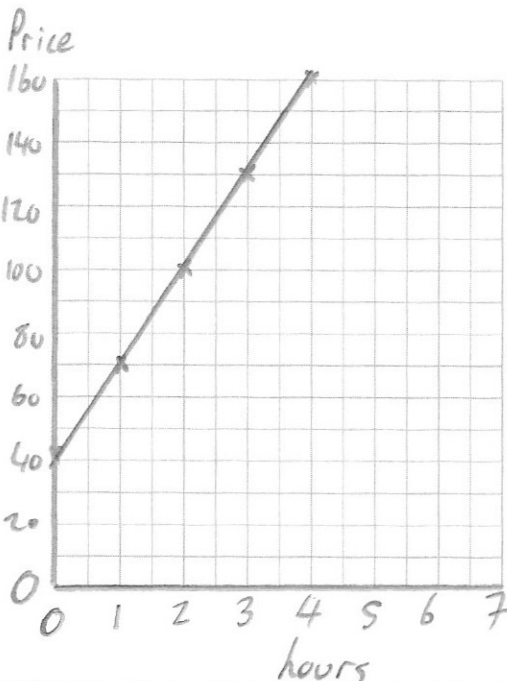
$$36 \div 4 = 9$$

Work out how many people took part in the survey.

$$9 \times 9 = 81$$

$$9 \times 5 = 45$$

$$81 + 45 = 126$$



The price of hiring a plumber is £30 per hour, plus a fixed cost of £40.

Number of hours	1	2	3	4
Price (£)	70	100	130	160

Complete the table

Draw a graph to show the price of hiring the plumber, with number of hours along the x-axis and price along the y-axis.