

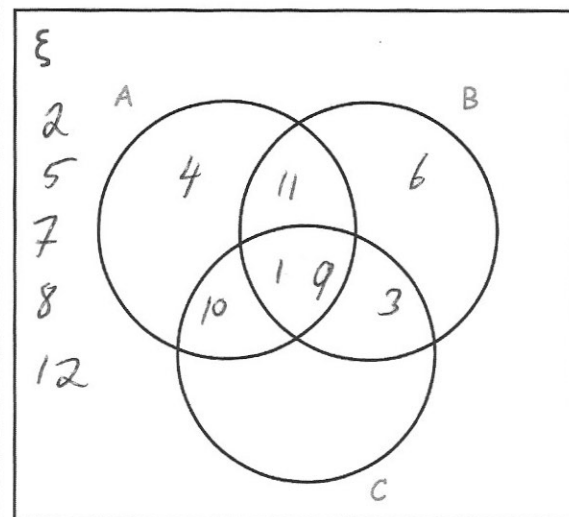
Find BC.

$$\cos(35) \times 8.7$$

$$7.127 \text{ cm to 3dp}$$

$\xi = \{1, 2, 3, 4, 5, 6, 7, 8, 9, 10, 11, 12\}$
 $A = \{1, 4, 9, 10, 11\}$
 $B = \{1, 3, 6, 9, 11\}$
 $C = \{1, 3, 9, 10\}$

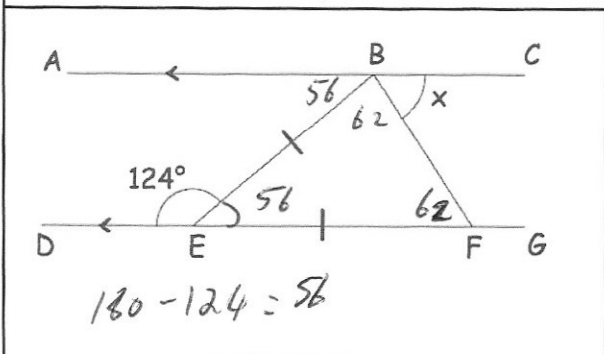
Complete the Venn diagram



A number is chosen at random

Find the probability that the number is a member of $B \cap C$

$$\frac{3}{12} = \frac{1}{4}$$



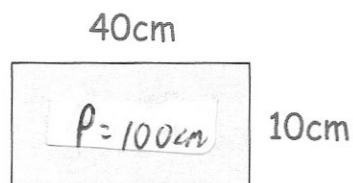
Find the size of the angle x.

$$180 - 56 - 62 = 62^\circ$$

The length of the rectangle is decreased by 40%. $100\% \Rightarrow 4$ $40\% \Rightarrow 16$ 24 cm
 The width of the rectangle is decreased by 20% 8 cm

Find the percentage decrease in the perimeter of the rectangle.

$$36\%$$



$$24 + 8 + 24 + 8 = 64 \text{ cm}$$

$$\frac{36}{100} \times 100$$