



Anna, Beth and Crystal share money in the ratio 2:3:5.

Crystal receives £75.

How much does Beth receive?

$$75 \div 5 = 15$$

$$15 \times 3 = \underline{\underline{45}}$$

Simplify

$$\frac{7^2 \times 7^3}{7}$$

$$\frac{7^5}{7} = 7^4$$

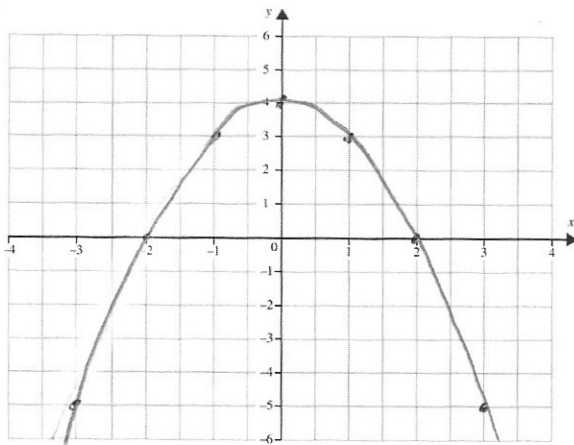
Solve

$$\frac{8x - 1}{2} = 3x + 11$$

$$8x - 1 = 6x + 22$$

$$2x = 23$$

$$x = 11.5$$



Complete the table for the graph  
 $y = 4 - x^2$

x	-3	-2	-1	0	1	2
y	-5	0	3	4	3	0

Draw the graph on the grid.