



$c = 0.94$ when truncated to two decimal places.

Write an inequality to show the interval in which the actual value of c lies.

$$0.94 \leq c < 0.95$$

Work out

$$1\frac{9}{20} \times 2\frac{2}{3}$$

$$\frac{29}{20} \times \frac{8}{3} = \frac{232}{60}$$

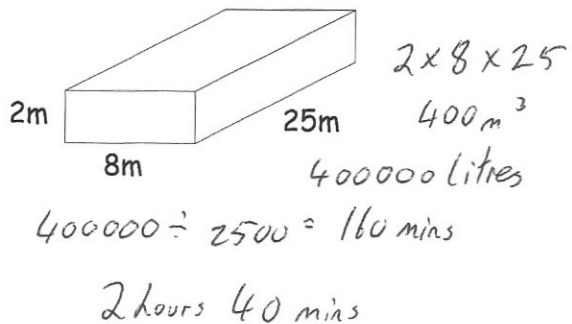
$$\frac{58}{15}$$

$$3\frac{13}{15}$$

Maisie is going to fill an empty swimming pool. She fills it with water at a constant rate of 2500 litres per minute.

$$1\text{m}^3 = 1000 \text{ litres}$$

How long will it take to fill the pool?



Expand and simplify

$$x(8x + 3) - 2x(x - 5)$$

$$8x^2 + 3x - 2x^2 + 10x$$

$$6x^2 + 13x$$

A regular polygon has exterior angle 15°

$$180 - 15 = 165^\circ$$

How many sides does it have?

$$360^\circ \div 15^\circ = 24 \text{ sides}$$