

5th March

Foundation Plus 5-a-day



Corbettmaths

A particle travels at 20km/h.

What is this speed in metres per second?

$$5.5 \text{ m/s}$$

$$20000 \text{ m/hour}$$

$$\div 60$$

$$333.3 \text{ m/min}$$

$$\div 60$$

$$5.5 \text{ m/s}$$

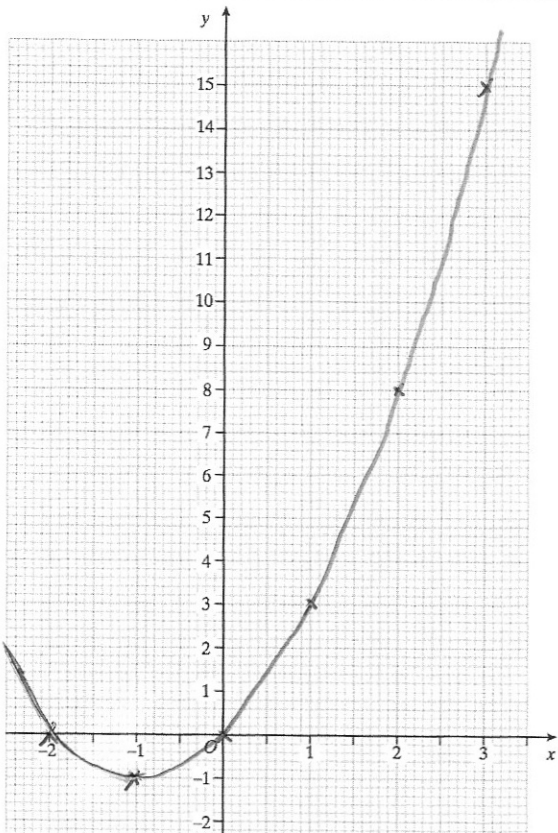
Work out the value of

$$\frac{2^{-4} \times 2^{-3}}{2^{-11}}$$

$$\frac{2^{-7}}{2^{-11}}$$

$$-7 - (-11) = 4$$

$$2^4 = 16$$



Complete the table of values of $y = x^2 + 2x$

x	-2	-1	0	1	2	3
y	0	-1	0	3	8	15

Draw the graph $y = x^2 + 2x$

Write down the coordinates of the turning point on the graph $y = x^2 + 2x$

$$(-1, -1)$$