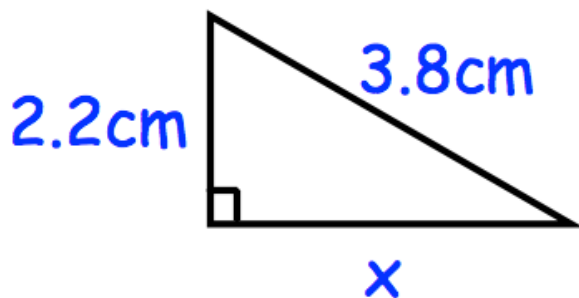




Harry catches the train from Belfast to Dublin at 4pm.
The average speed of the train is 70mph and the distance from Belfast to Dublin is 105 miles.
What time does Harry arrive in Dublin?

A garage has reduced all the normal prices of its cars by 10% in a sale.
Aga pays £4140 for a car in a sale.
Calculate the normal price of the car.

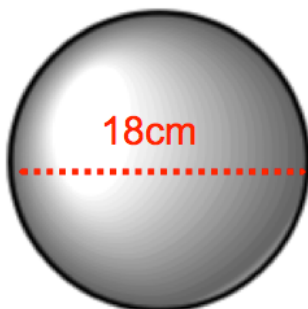


Find x.

Martina wants to convert £3000 into Euros. The Post Office only has €20 notes.

The exchange rate is £1 = €1.17

Work out how many €20 notes Martina will receive.



A sphere has a diameter of 18cm
Calculate the volume of the sphere.
Give your answer to 1 decimal place.