



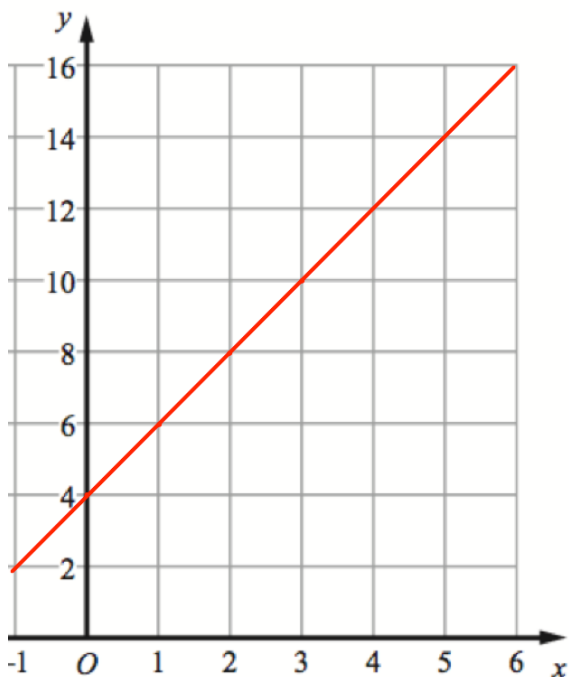
A car travels for 4 hours at an average speed of 45 mph and then 6 hours at an average speed of 35 mph.

Work out the total distance travelled.

Work out the average speed for the entire journey.

Jackson thinks of a number.
He increases it by 315% and his answer is 7885.

Work out $\frac{3}{4}$ of Jackson's original number.



Find the gradient of the line.

Work out the equation of the line.