



Olivia is buying a new laptop and she is offered a deal if she trades in her old laptop.

£25 per month for 4 years.

If old laptop is traded in,
get 7% off

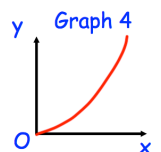
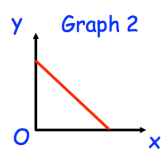
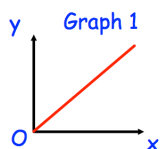
How much will Olivia pay in total?

Factorise $x^2 + x - 6$

Work out 465% of 70

Work out (without using a calculator)

$$\sqrt[3]{8} + 2^5 + \sqrt{196} \times 2^{-1}$$



One of the graphs shows that y is directly proportional to x .

Which graph?