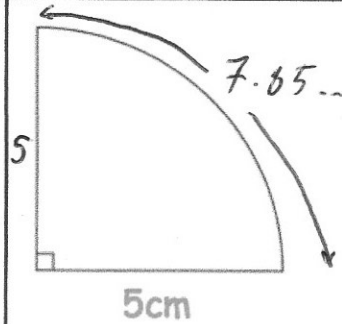




Calculate the perimeter of this quarter circle

$$\frac{1}{4} \times \pi \times 10 = 7.85\dots$$

$$7.85\dots + 5 + 5 = 17.854\text{cm}$$



The mean of four numbers is 10.
Three of the numbers are 9, 11 and 7.

Work out the fourth number.

$$4 \times 10 = 40$$

$$40 - 9 - 11 - 7 = 13$$

Input \rightarrow $\times \frac{3}{4}$ \rightarrow $\div \frac{2}{3}$ \rightarrow Output

Find the output if the input is 5

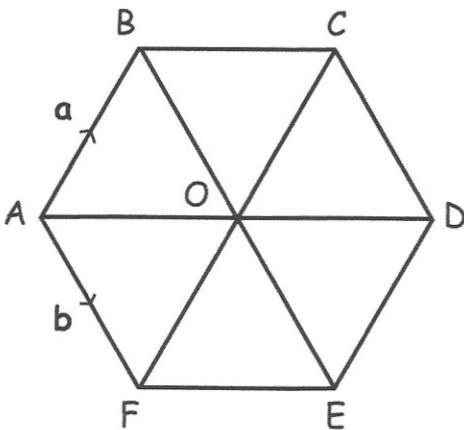
$$5 \times \frac{3}{4} = \frac{15}{4}$$

$$\frac{15}{4} \div \frac{2}{3}$$

$$5 \frac{5}{8}$$

$$\frac{15}{4} \times \frac{3}{2} = \frac{45}{8}$$

ABCDEF is a regular hexagon, with centre O.



$$\vec{AB} = a \quad \vec{AF} = b$$

Express in terms of **a** and **b** the vector

\vec{FC}

$$2a$$

Express in terms of **a** and **b** the vector

\vec{AO}

$$a + b$$