

Angle BAC = 29°
Find angle ABC

61°

8 builders can finish a building in 20 days. Each of the builders works at the same rate.

160 builder days

5 of the builders stop working after 8 days. The other builders continue building the house at the same rate until it is finished.

How long does it take the building to get built?

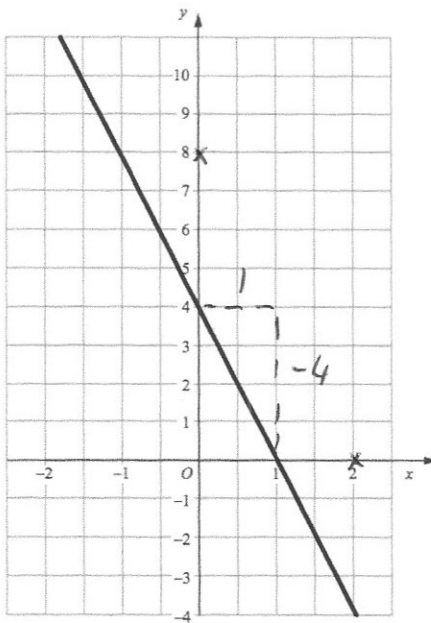
$8 \times 8 = 64$

$160 - 64 = 96$

$96 \div 3 = 32$

$32 + 8 =$

40 days



The line A is drawn on the grid.

Find the gradient of line A.

-4

Another line B is parallel to line A and passes through the point (2, 0)

Find the equation for line B.

$y = -4x + 8$

Arthur has a bag of 10 bonbons. 2 of the bonbons are lemon and the rest are strawberry.

Arthur takes out two bonbons without replacement.

Find the probability that the bonbons are different flavours.

$P(LL) = \frac{2}{10} \times \frac{1}{9} = \frac{2}{90}$

$P(SS) = \frac{8}{10} \times \frac{7}{9} = \frac{56}{90}$

$\frac{58}{90}$

$1 - \frac{58}{90} = \frac{32}{90}$

$\frac{16}{45}$