

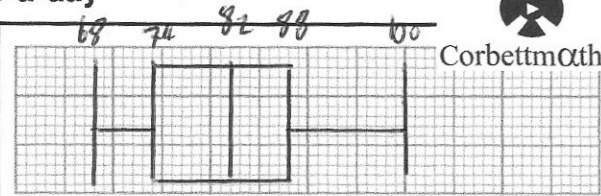
21st August

Higher 5-a-day



Corbettmaths

Lowest	68kg
Lower Quartile	74kg
Median	82kg
Upper Quartile	88kg
Highest	100kg



Draw a box plot to show this information

A car travels at 50mph, correct to 1 significant figure. $45/55$
 It covers a distance of 300 miles, correct to 2 significant figures.

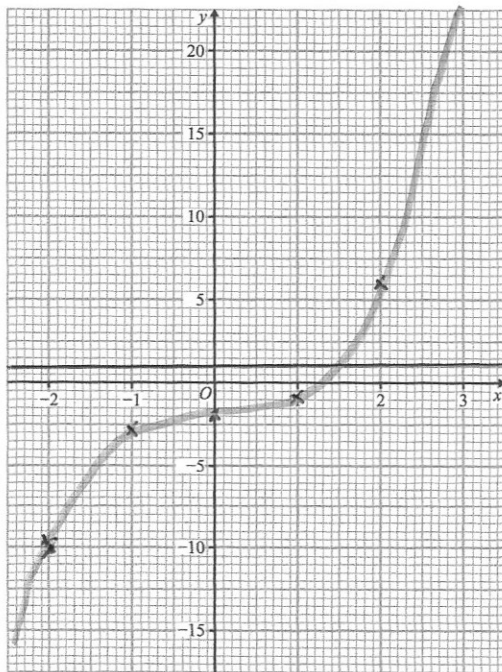
$$295/305$$

Calculate the **least** possible time taken.

$$s^d t$$

$$\text{min } t = \frac{\text{min } d}{\text{max } s}$$

$$= \frac{295}{55} = 5.36 \text{ hours}$$



Draw the graph of $y = x^3 - 2$ for the values of x from -2 to 2 .

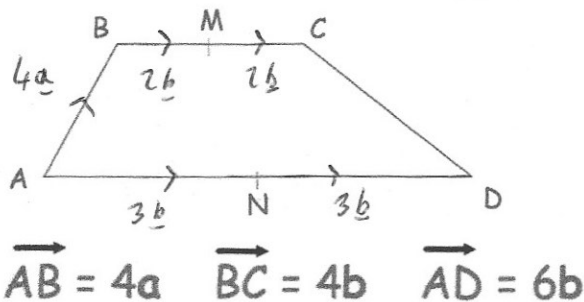
x	-2	-1	0	1	2
y	-10	-3	-2	-1	6

Use your graph to find an approximate answer to $x^3 - 3 = 0$

$$x^3 - 2 = 1$$

$$y = 1$$

$$x = 1.45$$



M is the midpoint of BC.
 N is the midpoint of AD.

Find

$$\begin{aligned} \vec{MN} &= -2b - 4a + 3b \\ &= b - 4a \end{aligned}$$