

DEFG is a parallelogram
EH = EF

Find x
 $360 - 104 = 256$
 $256 \div 2 = 128^\circ$

$$128 - 50 - 76 = 2^\circ$$

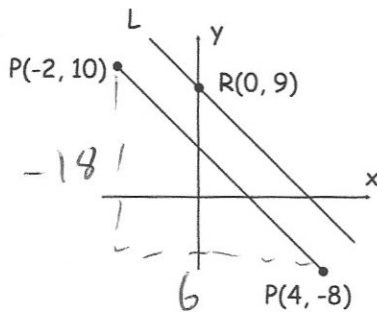
Factorise

$$x^2 - y^2 \quad (x - y)(x + y)$$

Factorise

$$2x^2 + 17x + 21$$

$$(2x + 3)(x + 7)$$

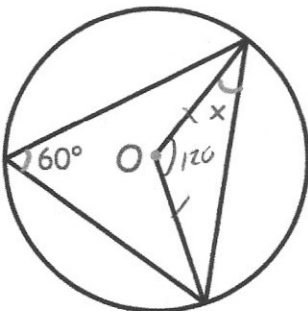


Line L and PQ are parallel.

Find the equation of L.

$$\frac{-18}{6} = -3$$

$$y = -3x + 9$$



Find x

$$180 - 120 = 60$$

$$60 \div 2 = 30^\circ$$

=

A radioactive substance decays with time. The mass of the substance reduces by 8% each year.

How many years will it take for 400kg of the substance to decay to a mass of less than 20kg?

$$400 \times 0.92^{36}$$

$$= 19.88 \text{ kg}$$

36 years