

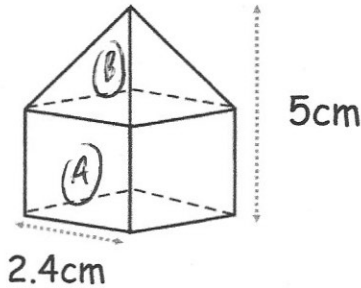
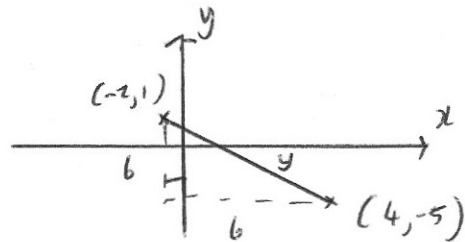


Calculate the distance between (-2, 1) and (4, -5).

$$6^2 + 6^2 = y^2$$

$$36 + 36 = y^2$$

$$y^2 = 72 \quad y = 6\sqrt{2}$$



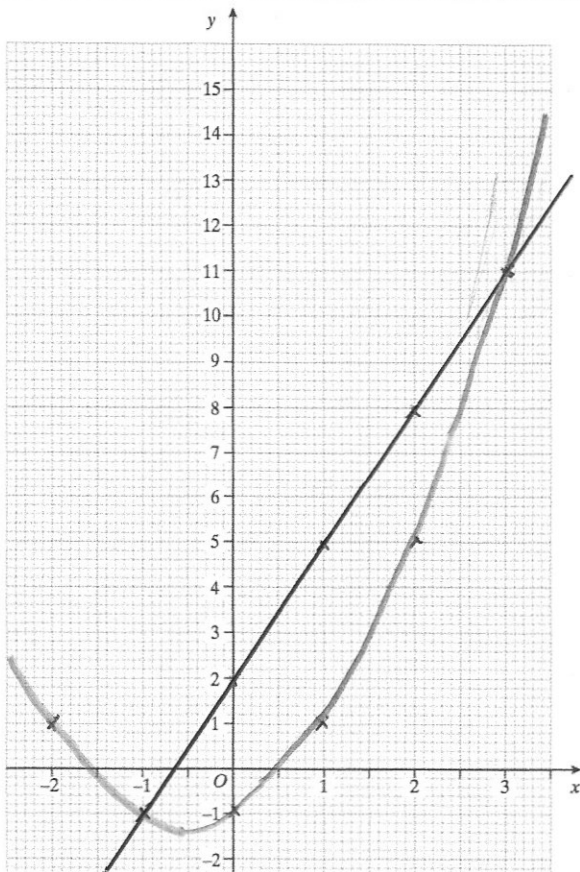
Shown is a shape made from a cube and a pyramid.

Calculate the volume

$$\text{Cube} : 2.4^3 = 13.824 \text{ cm}^3$$

$$\text{Pyramid} : \frac{1}{3} \times 2.4^2 \times 2.6 = 4.992 \text{ cm}^3$$

$$18.816 \text{ cm}^3$$



Draw the graph  $y = 3x + 2$

$x$	0	1	2
$y$	2	5	8

Draw the graph  $y = x^2 + x - 1$

$x$	-2	-1	0	1	2	3
$y$	1	-1	-1	1	5	11

Write down the coordinates of where the two graphs intersect.

$(-1, -1)$   
and  
 $(3, 11)$