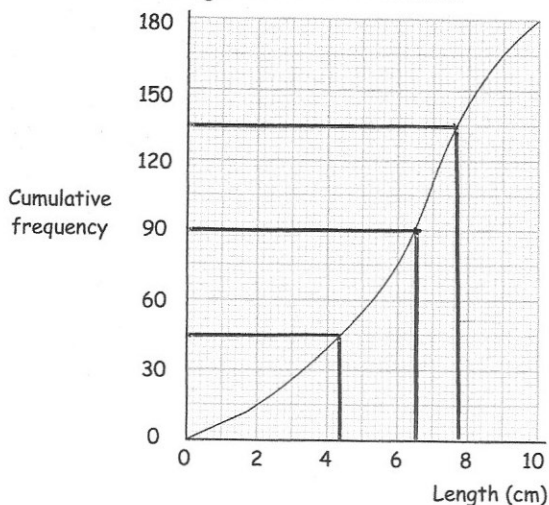




A group of 180 students were asked to draw a 5cm line without using a ruler. This cumulative frequency graph shows the actual lengths of their lines.



What is the median length?

$$6.5 \text{ cm}$$

What is the interquartile range?

$$7.7 - 4.4$$

$$= 3.3 \text{ cm}$$

Write $0.8\dot{9}$ as a fraction.

$$x = 0.8\dot{9}$$

$$10x = 8.\dot{9}$$

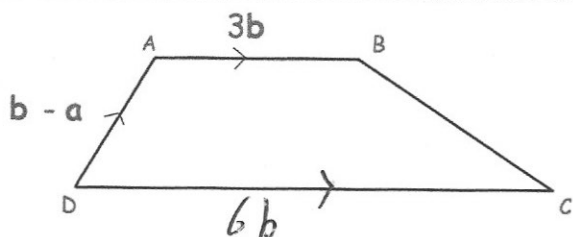
$$100x = 89.\dot{9}$$

$$90x = 81$$

$$x = \frac{81}{90} = \frac{9}{10}$$

Factorise $2y^2 + 7y - 15$

$$(2y - 3)(y + 5)$$



AB and DC are parallel.
DC = 2AB

Write down a vector for \overrightarrow{BC}

$$-3\mathbf{b} - (\mathbf{b} - \mathbf{a}) + 6\mathbf{b}$$

$$-3\mathbf{b} - \mathbf{b} + \mathbf{a} + 6\mathbf{b}$$

$$\mathbf{a} + 2\mathbf{b}$$