



A full water tank springs a leak, at the base, and loses 8% of its contents each minute.

What percentage of water is lost over 5 minutes?

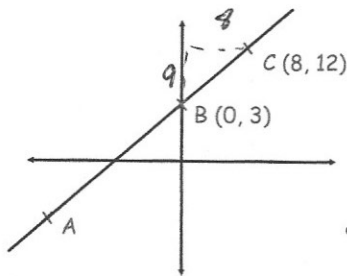
$$100 \times 0.92^5 = 65.908$$

$$100 - 65.908 = 34.092\%$$

Simplify $\sqrt{48}$

$$\sqrt{16} \times \sqrt{3}$$

$$4\sqrt{3}$$



AB:BC is 5:2

Find the coordinates of point A

$$8 \div 2 = 4$$

$$4 \times 5 = 20$$

$$9 \div 2 = 4.5$$

$$4.5 \times 5 = 22.5$$

$$3 - 22.5 = -19.5$$

$$(-20, -19.5)$$

Convert $0.\overline{34}$ to a fraction.

Give your answer in its simplest form.

$$x = 0.344\dots$$

$$10x = 3.44\dots$$

$$100x = 34.44\dots$$

$$90x = 31$$

$$x = \frac{31}{90}$$

$$(ax + 1)(x - 3)(x + b) \equiv 2x^3 - 3x^2 - 8x - 3$$

Find a and b

$$a = 2$$

$$b = 1$$

$$ax^3 = 2x^3$$

$$a = 2$$

$$-3b = -3$$

$$b = 1$$