



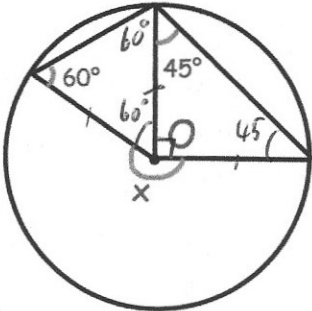
Expand and simplify

$$x(x + 1)(x - 2)$$

$$x(x^2 - 2x + x - 2)$$

$$x(x^2 - x - 2)$$

$$x^3 - x^2 - 2x$$



Find x

$$360 - 90 - 60 = 210^\circ$$

Alannah, Colin and Hannah visit the park and collect conkers and acorns. In total they collect the same number of conkers and acorns. Alannah, Colin and Hannah collect conkers in the ratio 4:7:9 Alannah, Colin and Hannah collect acorns in the ratio 3:1:5

What is the lowest possible number of conkers they could have collected?

$$4 + 7 + 9 = 20$$

$$3 + 1 + 5 = 9$$

$$\text{LCM of } 9 \text{ \& } 20 = 180$$

Finn has 20 apples in a crate. The masses of the apples are shown in the table.

Mass, m grams	Frequency
$50 < m \leq 70$	2
$70 < m \leq 80$	3
$80 < m \leq 85$	6
$85 < m \leq 90$	5
$90 < m \leq 110$	4

*fd*

0.1

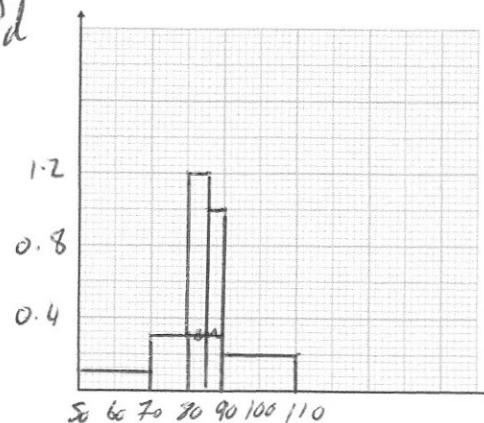
0.3

1.2

1

0.2

*fd*



*mass (g)*

Draw a histogram to show this information.