

6th July

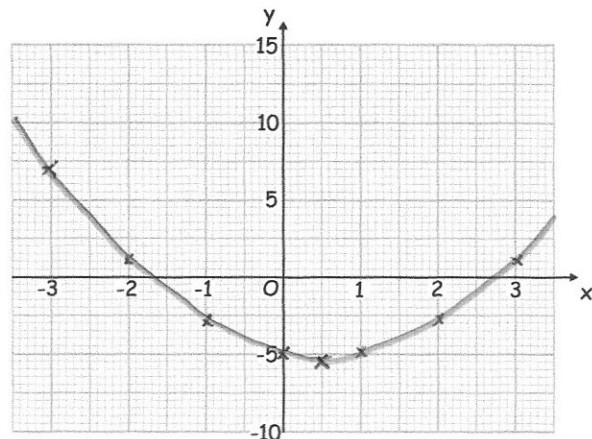
Higher 5-a-day



Corbettmaths

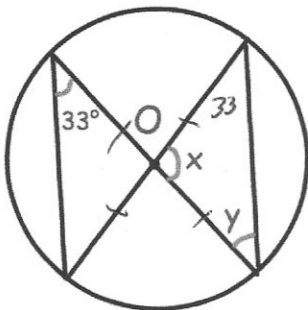
Draw $y = x^2 - x - 5$

x	-3	-2	-1	0	1	2	3
y	7	1	-3	-5	-5	-3	1



Use your graph to find an estimate for the coordinates of the turning point.

$(0.5, -5.5)$

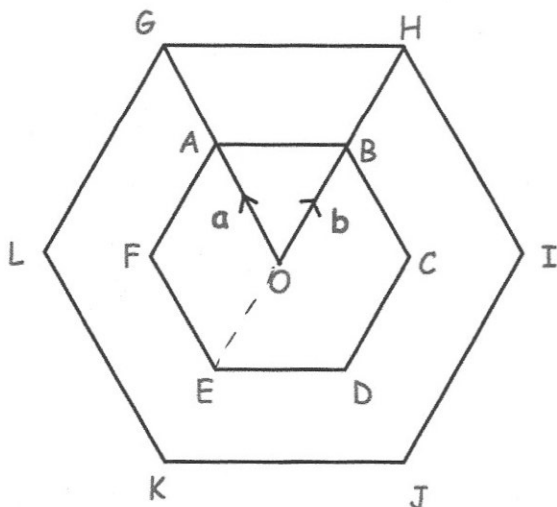


Find x and y

$$y = 33^\circ$$

$$x = 180 - 33 - 33$$

$$x = 114^\circ$$



Write down a vector for \overrightarrow{OE}

$$-b$$

Write down a vector for \overrightarrow{LI}

$$\overrightarrow{LO} = 2b - 2a$$

$$\overrightarrow{LI} = 4b - 4a$$

ABCDEF and GHIJKL are regular hexagons with centre O.

GHIJKL is an enlargement of ABCDEF, with scale factor 2.