

Work out 9^0

1

Work out $27^{\frac{2}{3}}$

$$\sqrt[3]{27} = 3$$

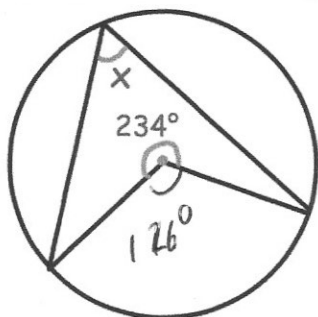
$$3^2 = 9$$

Simplify

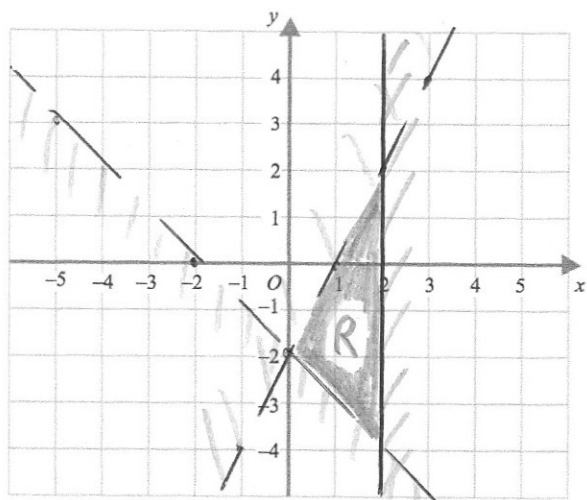
$$2\sqrt{2} \times 3\sqrt{18}$$

$$6 \times \sqrt{36}$$

$$6 \times 6 = 36$$

Find x .

$$126 \div 2 = 63^\circ$$



On the grid, clearly label the region which satisfies all three inequalities below

$$x \leq 2$$

$$y < 2x - 2$$

$$x + y + 2 > 0$$