



Work out

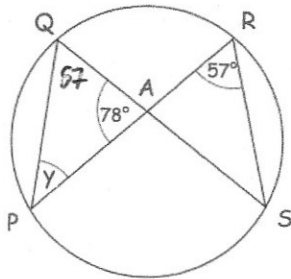
$$\sqrt{2} \times \sqrt{32}$$

$$\sqrt{64} = 8$$

$$8$$

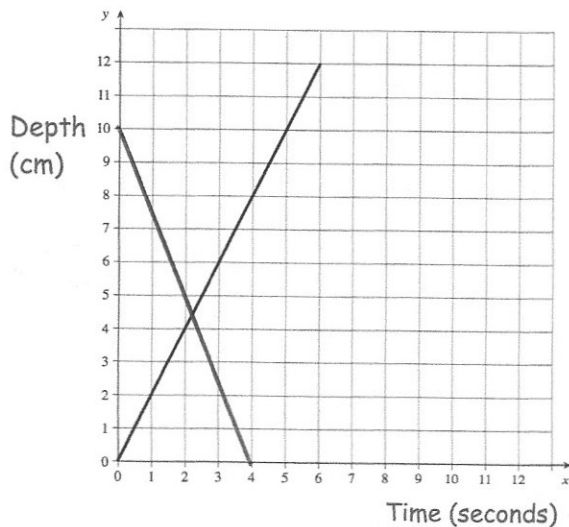
Work out

$$8\sqrt{15} \div 2\sqrt{3} \quad 4\sqrt{5}$$

Find y

$$180 - 57 - 78$$

$$45^\circ$$



Water is poured into a glass for 6 seconds. The graph shows the depth of the water in the glass.

What is the rate of change of the depth of the water?

Give your answer in cm/s.

$$2 \text{ cm/s}$$

Another glass contains water that is 10cm deep.

It is emptied at a rate of 2.5cm/s.

Show this on the graph.

$$4 \text{ seconds}$$

A one kilogram bag of coffee beans contains 7500 coffee beans. Assuming each bean has the same weight, work out the weight of one coffee bean.

Give your answer in standard form.

$$1000 \div 7500$$

$$0.1\dot{3} \text{ g per bean}$$

$$1.\dot{3} \times 10^{-1} \text{ g}$$