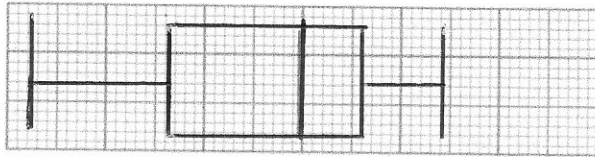


27th March

Higher 5-a-day



Lowest	LQ	Median	UQ	Highest
71	78	85	89	92

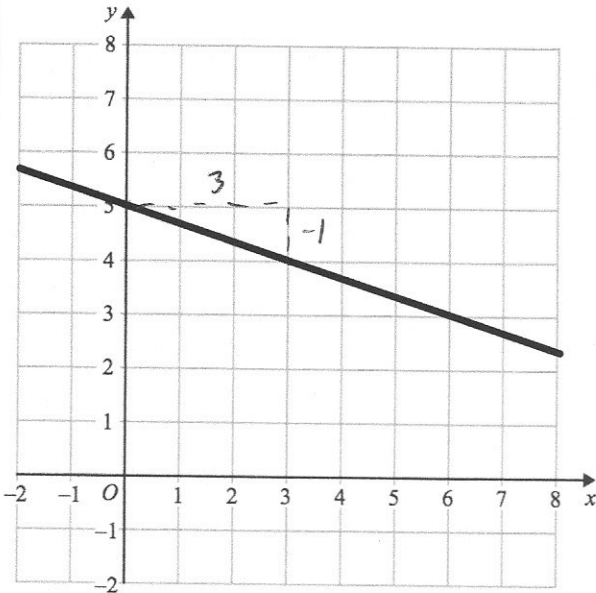


70 75 80 85 90 95

The median score was 85. Corbettmaths  
The lower quartile was 78 and lowest score was 71.

The range is 21 and interquartile range 10.

Draw the box plot



Line A is shown on the grid.

Find the equation of line A

$$y = -\frac{1}{3}x + 5$$

Line B is parallel to Line A and passes through (9, 20).

Find the equation of line B

$$y = -\frac{1}{3}x + 23$$

$$\begin{aligned} 20 &= -3 + c \\ c &= 23 \end{aligned}$$

What is the value of n

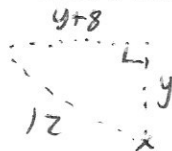
$$5^n = \frac{1}{125}$$

$$5^{-3}$$

$$n = -3$$

A man walks y miles north and then (y + 8) miles west.

He is now 12 miles from the starting point.



Show y satisfies  $y^2 + 8y - 40 = 0$

$$y^2 + (y+8)^2 = 12^2$$

$$y^2 + y^2 + 16y + 64 - 144 = 0$$

$$2y^2 + 16y - 80 = 0$$

$$y^2 + 8y - 40 = 0$$