

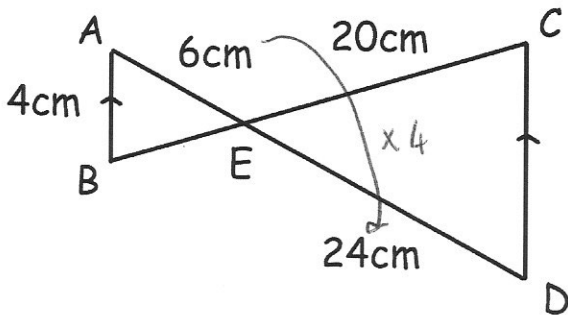
Find the size of angles:

CBD

$$52^\circ$$

ADB

$$36^\circ$$



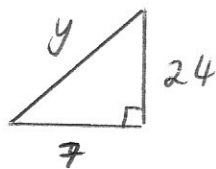
Find CD

$$4 \times 4 = 16 \text{ cm}$$

Find BE.

$$20 \div 4 = 5 \text{ cm}$$

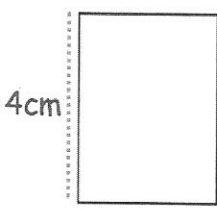
Calculate the distance between (9, 5) and (2, -19)



$$y^2 = 7^2 + 24^2$$

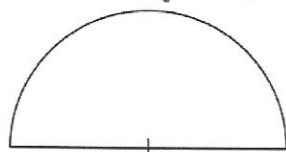
$$y^2 = 625$$

$$y = 25$$



$$8 + 2y$$

$$\frac{1}{2}(\pi \times 2y) + 2y$$



$$\pi y + 2y$$

The perimeters are equal.

Find y.

$$8 + 2y = \pi y + 2y$$

$$8 = \pi y$$

$$y = \frac{8}{\pi}$$