



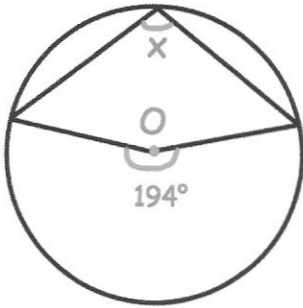
Solve, giving your answers to one decimal place.

$$3x^2 + 4x - 5 = 0$$

$a = 3$
 $b = 4$
 $c = -5$

$$x = \frac{-4 \pm \sqrt{16 - (-60)}}{6}$$

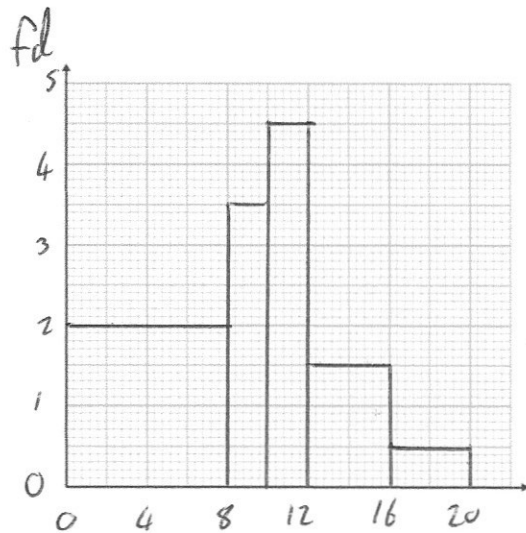
$x = 0.8$ or $x = -2.1$



Find x

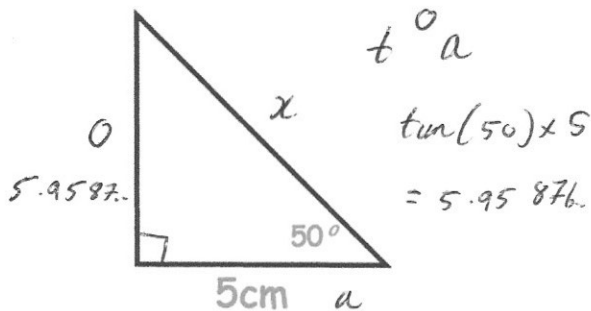
$194 \div 2 = 97^\circ$

length (l cm)	Frequency	fd
$0 < l \leq 8$	16	2
$8 < l \leq 10$	7	3.5
$10 < l \leq 12$	9	4.5
$12 < l \leq 16$	6	1.5
$16 < l \leq 20$	2	0.5



Draw a histogram to show this information.

length (cm)



Calculate the perimeter of the right angled triangle.

$$x^2 = 5^2 + 5.9587...^2$$

$$x^2 = 60.5069...$$

$$x = 7.7786...$$

perimeter = 18.737 cm