

7th September

Higher 5-a-day



Corbettmaths

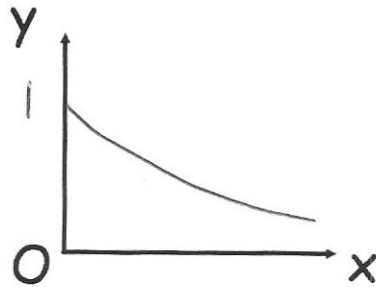
There are 120 crayons in a tub.
 6.8×10^5 tubs of crayons are made every month.

$$120 \times 6.8 \times 10^5 \times 12$$

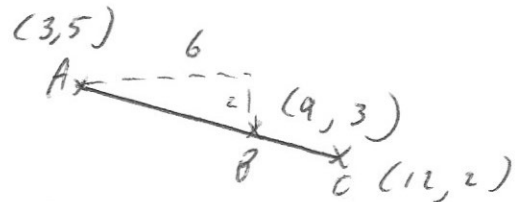
How many crayons are made in one year?
 Give your answer in standard form.

$$9.792 \times 10^8$$

Sketch $y = 0.5^x$



The points A(3, 5) and C(12, 2) are points on the straight line ABC.



AB:BC = 2:1.

$$(9, 3)$$

Work out the coordinates of B

A is inversely proportional to \sqrt{w}
 When $A = 1400$, $w = 16$.

$$A = \frac{k}{\sqrt{w}}$$

Find A when $w = 4$.

$$A = \frac{5600}{\sqrt{w}}$$

$$1400 = \frac{k}{4}$$

$$k = 5600$$

$$A = \frac{5600}{\sqrt{4}}$$

$$= 2800$$

The bearing of C from D is x°
 The bearing of D from C is $7x^\circ$ 210°

Find the bearing of D from C

$$360 - 7x + x = 180$$

$$-6x = -180$$

$$x = 30$$

