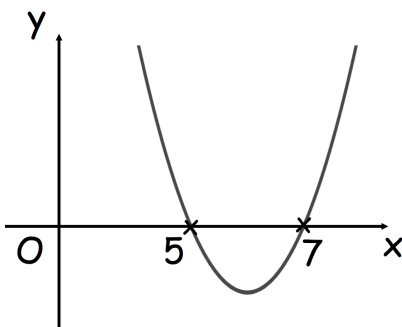
Find  $x$ 

Show that an increase of 10% followed by an increase of 10% is equivalent to a 21% increase overall.

Simplify  $(\sqrt{2})^4$ Simplify  $9\sqrt{2} \times 3\sqrt{5}$ Shown is a sketch of  $y = x^2 - 12x + 35$ 

Find the equation of the mirror line.

Show  $A' \cup B$  on the Venn diagram.