

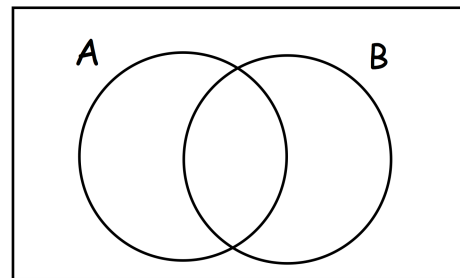


The weight of a bag of potatoes is 18kg, correct to the nearest kg.

Write down the lower bound for weight of the bag of potatoes.

Write down the upper bound for weight of the bag of potatoes.

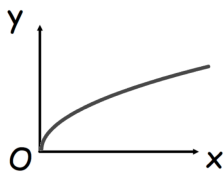
Show $A \cap B'$ on the Venn diagram.



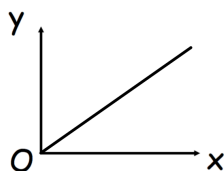
$$-1 \leq c \leq 10 \quad \text{and} \quad -4 \leq d \leq -2$$

Write down an inequality for $d - c$

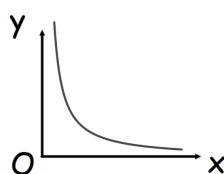
Match each graph to the correct relationship.



$$y \propto \frac{1}{x}$$



$$y \propto \sqrt{x}$$



$$y \propto x$$